

# Burnett Catchment Care Assoc Inc

## NEWSLETTER 18 August 2008

### Program Manager

#### **Right on Target**

"Uncertainty is the only certainty there is, and knowing how to live with insecurity is the only security." John Allen Paulos

At a time when *business as usual* is unusual and *uncertainty* more certain than not, BCCA staff have been focussing on delivering for the catchment.

Uncertainty pretty much sums up the Natural Resource Management sector at present. *How much, when, what will we be delivering*, are the questions being asked in meetings around the nation at present. Competition for funding at the regional, state and national level is intense. Leading some in the industry to suggest, that the recently closed **Caring For Our Country Open Grants** funding round, will be 5 to 10 times over-subscribed. That is going to mean a lot of unfunded projects and a lot of unhappy people.

Funding is becoming more and more targeted. In a competitive funding environment, applicants need to demonstrate their activities are a national priority, it's not enough to have a good project any more. Investors are looking for precise outcomes that deliver against pin point priorities. But what does this mean locally for the average primary producer, landcare group, or BCCA member.

It means at least in the short term, that funding will be more difficult to access. There will be a greater emphasis on accountability where public funds are spent on private property, and is far more likely to be targeted at smaller areas rather than inviting everyone catchment wide to apply.

While this is not too pleasing if you are not in a target area, there are a number of advantages to operating this way. Focussing activity and funding on smaller subcatchments requires less resources, builds a community of support around the goings on, and improves long term success. We are often faced with the paradoxical situation of being criticised for using funds on staffing and the resources required to support them, then in turn criticised for not having enough staff and support for landholders, attend events/meetings, etc. We have come to expect both forms of critique and as long as we hear both we know we probably have the balance about right.

Regardless BCCA staff are guided daily by trying to achieve the most significant investment we can for Burnett landholders and the catchment. I pay tribute to the executive for deciding to continue with a full compliment of staff when many organisations are putting people off. Their motivation I believe, was to put BCCA in a position to compete for funds in this turbulent environment. It is early days yet however there are signs that the vote of confidence is already paying off. BCCA recently received funds for four groups who had recently completed DPI+F's Grazing Land Management workshop series. The staff were able to rapidly get that money out to landholders were the real work begins. The National Landcare Program funding recently announced included a cross regional project called SuperGraze, BCCA staff made a significant contribution to the development of that proposal and the Burnett will receive a portion of that funding. Our staff have been advocating on behalf of Burnett primary producers in discussions around Reef Rescue (the Rudd Government's \$200 M election promise), BMRG's Regional Investment Strategy, and submitted 3 applications in the **Caring For Our Country Open Grants** funding round.

By focusing on core values, consistently sharing the benefits of investing in the Burnett, and 13 year track record, the BCCA message is strong and clear. If the Wall Street maxim, "*In times of crisis, money moves from weak hands to strong hands*" applies in the current environment, then BCCA, Burnett landholders and the Burnett catchment should represent strong hands and hopefully will be justly rewarded.

BCCA  
PO Box 105  
Mundubbera QLD 4626

P: 41653 551  
F: 41653 552

Email:  
[admin@burnettcatchment.org](mailto:admin@burnettcatchment.org)

BCCA staff are guided daily by trying to achieve the most significant investment we can for Burnett landholders.

#### INSIDE THIS ISSUE

- RENEWAL OF MEMBERSHIP FORM
- NOMINATION FORM FOR CANDIDATES

If you would like to receive a copy of this newsletter please email  
[admin@burnettcatchment.org](mailto:admin@burnettcatchment.org)

Or download a copy from our web sites  
[www.burnettcatchment.org](http://www.burnettcatchment.org)  
[www.betterburnett.com](http://www.betterburnett.com)



# Burnett Catchment Care Assoc Inc

## NEWSLETTER 18 August 2008

BCCA  
PO Box 105  
Mundubbera QLD 4626

P: 41653 551  
F: 41653 552

Email:  
admin@burnettcatchment.org

### What's On

1—2: Sept BMRG  
Partnership Showcase  
21—24: Sept Landcare  
Conference Monto

Radio taggers that are used to  
track the female turtles



### Better Beef

The Better Beef program has been a busy one in the last month with the launch of the Grazing Land Management Incentives Project. The major investor for this incentive is BMRG. This project involved providing incentives to 17 landholders who have recently completed the DPI&F Grazing Land Management Workshop series to implement sustainable grazing enhancements on their properties. This included enhancements such as erosion control, fencing of riparian zones and the provision of off-stream watering points. With this project we trialled an online application process which we found worked quite successfully, with only a few glitches. This online application allowed for rapid processing and a streamlined assessment process. The announcement that the National Landcare Program has approved the Supergraze project, aimed at maximising adoption of sustainable grazing practices in Southern Queensland, will mean even busier times to come. Supergraze is a project involving three NRM regional groups, Burnett Mary Regional Group, South East Queensland Catchments and Condamine Alliance as well as both Mary River Catchment Coordinating Committee and BCCA as minor partners. Roll out arrangements for Supergraze are currently being negotiated.

### Better Bush

This past month has seen the Better Bush programme focussing on the Creeping Lantana compost tea demonstration site near Monto and following on from the success of the first release of biocontrol agents for Cats Claw Creeper, has seen a second release in the North Burnett. Both will be part of the Sip and Sap field trip for the Queensland Landcare Conference in Monto at the end of next month, along with a look at private native forestry and the Waratah Winery. Louise attended a soils seminar hosted by biological farming company, BioNutrient Solutions as part of the compost tea project and the whole Better Burnett team have been taking part in the Caring for our Country application.

### Better Waterways Elsie and friends now easier to track!

As nesting season has come to a close for Elsie, the White Throated Snapping Turtle (*Eseya albagula*) and her friends, it is now the time to start tracking their movements to see how far, where and when they move.

Recently BCCA purchased a number of radio taggers that will be placed onto the backs of female White Throated Snapping Turtle. These taggers will enable the EPA to gain a better understanding of the White Throated Snapping Turtle, their movements of where they go and how far they travel just to find a perfect nesting place along the Burnett River. Hopefully with this data there will be a better understanding of the turtle and how to assist in preventing the turtle from being completely removed from the Burnett Catchment. The taggers are carefully placed and attached by experienced EPA staff. Tagger numbers recorded and the turtles then released back into the Burnett River. Once this process has been done, the turtles are then monitored every nesting season and throughout the year to see what really happens in the life of Elsie and her friends.



# Burnett Catchment Care Assoc Inc

## NEWSLETTER 18 August 2008

### Association News

#### **Renewal of Membership**

At the last General Meeting, the members present decided to set the membership fee for the current financial year (2008/2009) at \$1. You will find attached to this newsletter a Renewal of Subscription form. Would you please fill this in and send it together with you \$1 membership fee to the office. You may also pay in person at the next meeting of the Association, but we would like you to fill in the form, as this makes it easier to keep a track of members.

Paying your annual subscription ensures you have a say in the affairs of the Association, as only paid-up members are entitled to a vote on Association matters.

---

#### **Changes to the Constitution**

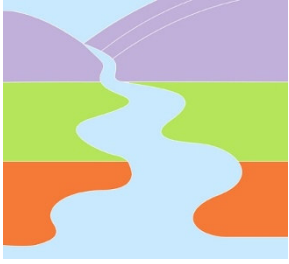
At the most recent general meeting of the Association, held on the 28<sup>th</sup> July in Eidsvold, the members present voted to change the Constitution of the Association. As these changes are unlikely to be registered by the Office of Fair Trading before our Annual General Meeting is held (due on the 29<sup>th</sup> September), we will have to work under our current Constitution. In the past, our Association has made several by-laws concerning the detailed running of our Association, however these were not kept together with our Constitution and can now not be found. Therefore, our member David Rolfe and Secretary Marion Denholm, have been given the job of producing some guidelines to help you understand what is involved in electing people at the Annual General Meeting. They are attached to this newsletter, together with a nomination form. Please read the guidelines carefully and if there is anything you don't understand, please contact Secretary Marion Denholm.

---

#### **Water Quality Monitoring**

The Central Branch of the BCCA has been running a water quality monitoring program over the past two years. We measure water quality at 15 different sites around the central Burnett streams. This project officially finished on the 30<sup>th</sup> June, however we should be able to stretch our budget until the end of September. It takes about three years of constant monitoring to get a picture of the 'average' water flow & quality in streams. Water Co-ordinator at the Burnett Mary Regional Group, Mr Graeme Esslemont has done a fantastic job of reviving groups that were previously monitoring and encouraging new groups to begin. Workshops were provided to teach the basics of water monitoring & macroinvertebrate identification (the small bugs that live in fresh water). In a very short time, he has managed to get a good network going that covers most of the Burnett & Mary catchments. He has also got the network onto a more scientific footing with each group having samples tested at the Wide Bay Water labs in Hervey Bay. Graeme has applied, on behalf of the network, for a grant from the Caring for our Country program to keep the work going. We hope this application is successful, as it would be a pity to see the work finish just as it is beginning to show some results.





# BURNETT CATCHMENT CARE ASSOCIATION

---

## RENEWAL OF MEMBERSHIP

**Membership Fee \$1**

Thank you for your continuing interest in the BCCA. Please fill out the following details;

Name: \_\_\_\_\_

Postal Address: \_\_\_\_\_  
\_\_\_\_\_

Phone: \_\_\_\_\_

Fax: \_\_\_\_\_

E-Mail: \_\_\_\_\_

Postage stamps are an acceptable form of payment.

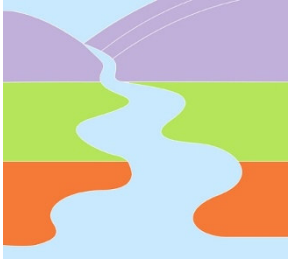
Please post form and fee to;

The Secretary, P.O. Box 105

Mundubbera 4626

Should you require any further information,  
please phone our office on Ph. No. 41 653 551

Signature of Secretary: \_\_\_\_\_ Date received: \_\_\_\_\_



# BURNETT CATCHMENT CARE ASSOCIATION

---

## **Guidelines for Nomination of Candidates and Voting for the AGM Sept. 2008**

### **General Guidelines:**

The Management Committee (or executive) is elected to oversee the day-to-day operations & affairs of the Association, however it is the members as a whole who set direction & policies.

1. We must elect not less than 3 people to be on our Management Committee.
2. The Management Committee must include a President, Vice-President and Treasurer of the Association.
3. The Secretary of the Association does not have to be a member, they can be an outsider appointed to do the secretarial duties, or they can be a member elected to the position.
4. It is up to the members of the Association to decide what other positions and how many people altogether they want to have on the Management Committee.

### **Nomination of Candidates:**

1. Before the AGM, candidates for the Management Committee must be nominated and seconded by two other members. (There is a nomination form on the back of this letter which can be copied). This form must be filled out and returned to the Secretary at least 14 days before the AGM is due to be held. (I would prefer it a bit sooner – say by the 10<sup>th</sup> of September).
2. A list of the candidates will go out with the Notice of the AGM to every member.
3. At the AGM, all the people that have been on the Management Committee must retire from their positions, but they are all eligible to stand again.
4. If at the start of the meeting, there are not enough candidates nominated to fill the required positions, nominations can be taken from the floor of the meeting.

### **Voting at the Annual General Meeting:**

1. Each paid-up member present can vote for 1 person for each vacant position.
2. Voting can be by
  - a) a show of hands
  - b) a division of members
  - c) a secret ballot - the existing Management Committee can direct the Secretary beforehand to prepare voting papers for a secret ballot or if at least 20% of the members present at the meeting request it, a secret ballot may be held.
3. We will probably have 2 rounds of voting – first, to elect the people we want on the Management Committee, second, to elect from among those people the ones we want to fill executive positions of president, treasurer etc.



# BURNETT CATCHMENT CARE ASSOCIATION

---

## NOMINATION FORM FOR CANDIDATES FOR THE MANAGEMENT COMMITTEE OF THE BCCA 2008/2009

We, the undersigned, being members of the Burnett Catchment Care Association,

do hereby nominate (name) \_\_\_\_\_

of (address) \_\_\_\_\_

being a member of the Burnett Catchment Care Association, for election to a position

on the Management Committee of the Association.

Nominator (signature) \_\_\_\_\_ (date) \_\_\_\_\_

Print full name: \_\_\_\_\_

Seconder (signature) \_\_\_\_\_ (date) \_\_\_\_\_

Print full name: \_\_\_\_\_

I, the undersigned, do hereby accept nomination for election to a position on the Management

Committee of the Association.

Candidate (signature) \_\_\_\_\_ (date) \_\_\_\_\_

Print full name: \_\_\_\_\_

Received by the Secretary of the Burnett Catchment Care Association.

Signature: \_\_\_\_\_ (date) \_\_\_\_\_