



Sustainable Land Practices enhancing the Great Barrier Reef

The people & property...

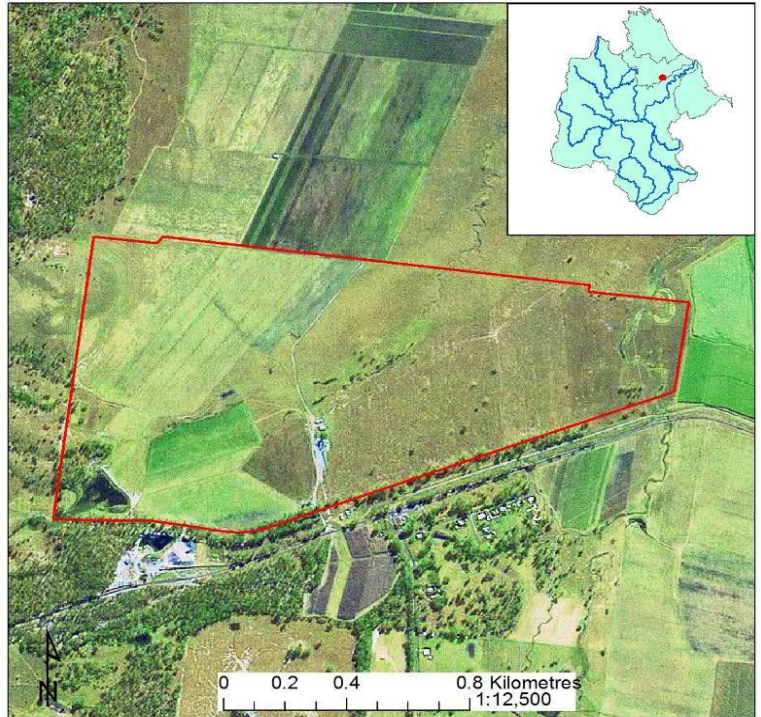
Graham and Marie Claxton, Gin Gin, are committed to marketing finished and store cattle, while caring for the land for future generations.

With some assistance from the 'Caring for Our Country' Reef Rescue program, Graham set about installing additional internal fencing, fencing off a creek and providing an additional stock watering point.

The property is located in the Kolan Catchment.

The issues...

Until 2008, the 148 ha property consisted of only a boundary fence; it did not have any internal fences. Without internal fences, it was impossible to rotate cattle between paddocks, to allow the pasture to rest.



Satellite view of "Motons" west of Gin Gin, in the Kolan Catchment



The plan...

The Claxton's were granted funding from the Burnett Mary Reef Partnership, through the Australian Governments "Reef Rescue" program. A total of \$10,000 was granted to assist the Claxton's in improving ground cover management, in addition to the \$11,000 of cash and labour contributed by the Claxton's.

The solution...

More internal fencing was required to create additional paddocks. These extra paddocks created gave the Claxton's the opportunity to rotate cattle between paddocks. This rotation allows the pasture to rest at strategic times of the year. This pasture resting improves ground cover, which reduces the amount of sediment lost as runoff.

A creek was fenced off, reducing stock access. This will, in time, enhance stream bank stability and reduce sediment loss into the creek.

As stock usually watered in the creek, a trough was installed as an alternative water point.

More information...



Burnett Catchment Care Association
6 Lyell St ~ PO Box 8
Monto QLD 4630
P: (07) 41663898
E: admin@burnettcatchment.org
W: www.betterburnett.com

