

sustainable practices

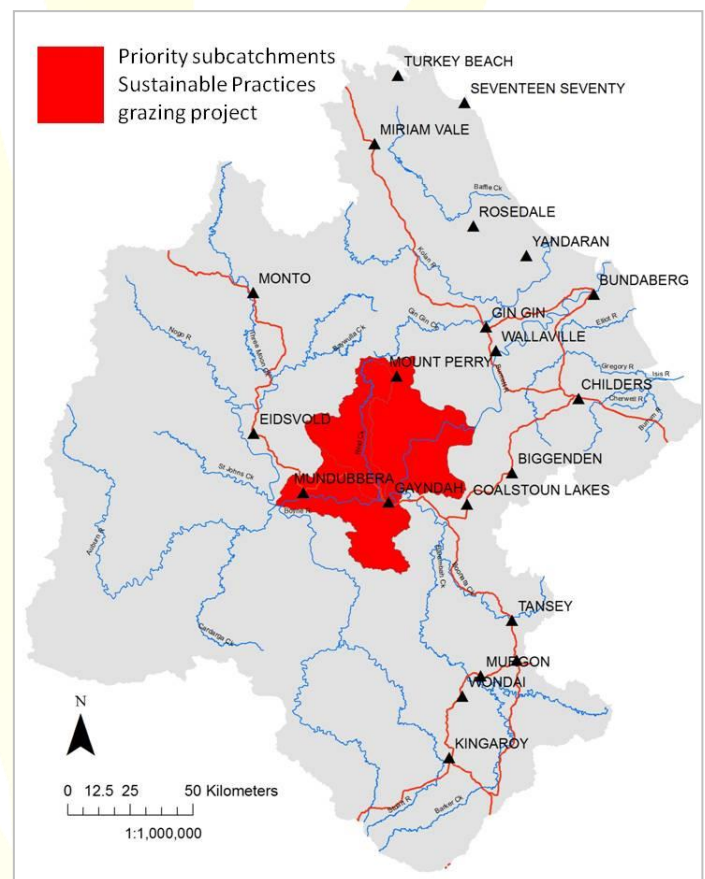
in the western burnett

10 things you need to know about Sustainable Practices – Grazing

1. To be eligible to participate in this round, you must have answered yes to all six Eligibility Questions below:
 1. Is your property located in the Lower Burnett River or Reid's Creek Subcatchments (see map)?
 2. Are you interested in developing a Property Management Plan for your property?
 3. Would you then be interested in implementing activities that sustainably address land management issues identified within your PMP?
 4. Are you willing to contribute \$ for \$ towards your improved land management activity?
 5. Are you prepared to have the improved land management activity completed by November 2011?
 6. Do you have an ABN and are you considered a primary producer?
2. Investment is limited and we have a limited number of Property Management Plans that we can assist graziers in developing therefore Expressions of Interest will be accepted on a "first in first served" basis & the ability to meet the eligibility criteria.
3. Graziers whose Expression of Interest has been accepted will be contacted by BCCA to arrange a meeting with a BCCA extension officer to begin the development of the Property Management Plan (PMP).
4. It is assumed that the PMP process will identify a number of land management issues that the grazier would like to address over time.
5. The BCCA extension officer will assist the grazier in determining the land management issue that is most likely going to fit the criteria for funding and will assist the grazier in completing a simple funding application form.

Examples of the types of activities that might be funded include but are not limited to:

- Fencing different landtypes to improve grazing or protect remnant timber
 - Fencing to allow for paddock rotations and resting
 - Actions to enhance remnant vegetation
 - Fencing of waterways to improve stream bank stability
 - Erosion remediation activities
 - Installation of watering points to improve grazing distribution and reduce impact on waterways
 - Revegetation of remnant vegetation/timbered areas with native spp
6. Examples of activities that would not be funded under Sustainable Practices include:
 - Planting introduced sown pastures
 - Purchase of capital equipment
 - Clearing native vegetation
 - Blade ploughing or stick raking
 7. These funding applications will be assessed by an assessment panel and the applications that best meet the criteria will be funded, within the funding available.
 8. Funding available is to a maximum of \$3000 and the grazier must contribute at least dollar for dollar. This however could be in kind contributions including grazier labour etc.
 9. If the funding application is approved, graziers will be provided with an agreement which will require the grazier to undertake the activities applied for and payment will be made upon the satisfactory completion of agreement milestones.
 10. Funded activities must be completed by November 2011.



CARING
FOR
OUR
COUNTRY

